

**CIR Antibody (C-term)**  
**Affinity Purified Rabbit Polyclonal Antibody (Pab)**  
**Catalog # AP1417b****Specification**

---

**CIR Antibody (C-term) - Product Information**

Application	WB,E
Primary Accession	<a href="#">Q86X95</a>
Reactivity	Human
Host	Rabbit
Clonality	Polyclonal
Isotype	Rabbit IgG
Calculated MW	52313
Antigen Region	396-424

**CIR Antibody (C-term) - Additional Information****Gene ID** 9541**Other Names**

Corepressor interacting with RBPJ 1, CBF1-interacting corepressor, Recepin, CIR1, CIR

**Target/Specificity**

This CIR antibody is generated from rabbits immunized with a KLH conjugated synthetic peptide between 396-424 amino acids from the C-terminal region of human CIR.

**Dilution**

WB~~1:1000

E~~Use at an assay dependent concentration.

**Format**

Purified polyclonal antibody supplied in PBS with 0.09% (W/V) sodium azide. This antibody is purified through a protein A column, followed by peptide affinity purification.

**Storage**

Maintain refrigerated at 2-8°C for up to 2 weeks. For long term storage store at -20°C in small aliquots to prevent freeze-thaw cycles.

**Precautions**

CIR Antibody (C-term) is for research use only and not for use in diagnostic or therapeutic procedures.

**CIR Antibody (C-term) - Protein Information****Name** CIR1**Synonyms** CIR

**Function** May modulate splice site selection during alternative splicing of pre-mRNAs (By similarity). Regulates transcription and acts as corepressor for RBPJ. Recruits RBPJ to the Sin3-histone deacetylase complex (HDAC). Required for RBPJ-mediated repression of transcription.

**Cellular Location**

Nucleus speckle. Cytoplasm, cytoskeleton, microtubule organizing center, centrosome.

Note=Colocalizes with NEK6 in the centrosome

**Tissue Location**

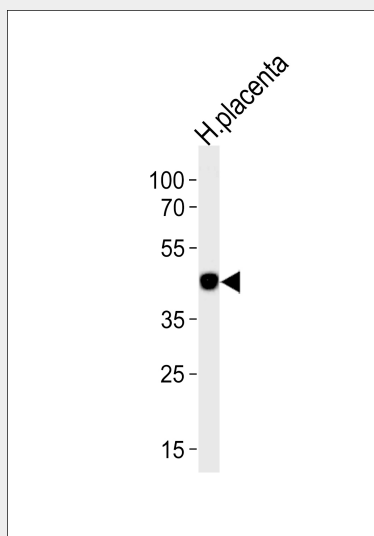
Highly expressed in heart, brain, placenta, liver, skeletal muscle and pancreas.

**CIR Antibody (C-term) - Protocols**

Provided below are standard protocols that you may find useful for product applications.

- [Western Blot](#)
- [Blocking Peptides](#)
- [Dot Blot](#)
- [Immunohistochemistry](#)
- [Immunofluorescence](#)
- [Immunoprecipitation](#)
- [Flow Cytometry](#)
- [Cell Culture](#)

**CIR Antibody (C-term) - Images**



Western blot analysis of lysate from human placenta tissue lysate, using CIR Antibody (C-term)(Cat. #AP1417b). AP1417b was diluted at 1:1000 at each lane. A goat anti-rabbit IgG H&L(HRP) at 1:5000 dilution was used as the secondary antibody. Lysate at 35ug.

**CIR Antibody (C-term) - Background**

CIR may modulate splice site selection during alternative splicing of pre-mRNAs. It regulates transcription and acts as corepressor for RBPSUH. It recruits RBPSUH to the Sin3-histone deacetylase complex (HDAC), and is required for RBPSUH-mediated repression of transcription.

**CIR Antibody (C-term) - References**

Olsen,J.V., Cell 127 (3), 635-648 (2006)  
Maita,H., Exp. Cell Res. 303 (2), 375-387 (2005)  
Zhou,S., Mol. Cell. Biol. 21 (18), 6222-6232 (2001)